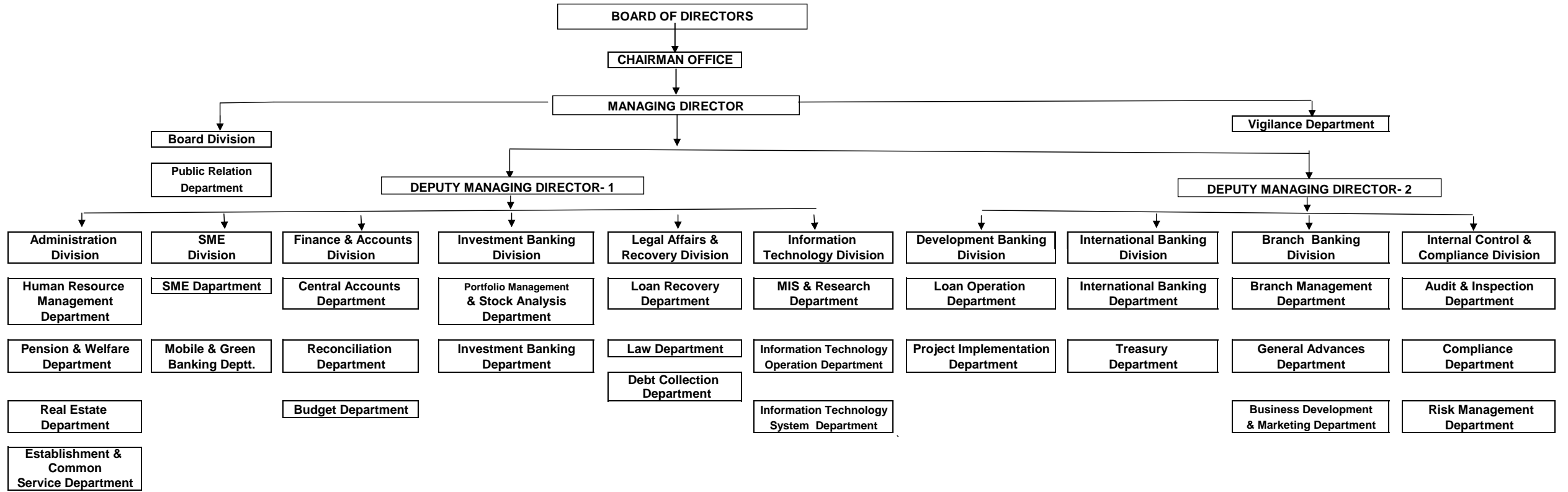


**BANGLADESH DEVELOPMENT BANK LIMITED**

**ORGANIZATIONAL STRUCTURE**



SUMMARY OF OFFICES :	
CHAIRMAN OFFICE	1
MANAGING DIRECTORS OFFICE	1
DY. MANAGING DIRECTORS OFFICE	2
DIVISION	11
DEPARTMENT	30
ZONE	4
BRANCH	27
PROPOSED BRANCH	23

OFFICE-WISE DISTRIBUTION OF MANPOWER	
HEAD OFFICE	581
ZONE	40
BRANCH OFFICE	595
PROPOSED 23 BRANCHES(2018)	253
TOTAL :	1469